



Chicago Blower Corporation Add: 1675 Glen Ellyn Rd. Ph: (630) 858-2600 E: fans@chicagoblower.com

Chicago Blower Glendale Heights, IL, 60139 F: (630) 858-7172 W: www.chicagoblower.com

General Ventilation

Tell Us About The Fan

Performance	
Value	Unit
Flow Required	
Pressure Required	
Temperature	
Elevation of project	
Direct or Belt Drive	
Fan Type	

Accessories Required (Fill In As Best You Can)

Inlet Type (Flange, Slip)	
Outlet Type (Flange Slip)	
Inlet Silencer	
~ Sound Attenuation (dBA@ft)	
Outlet Silencer	
~ Sound Attenuation (dBA@ft)	
Inlet Vane Damper (IVC)	
Outlet Damper	
~ Type (Parallel, Opposed)	
Drain and Plug	
Inlet Screen	
Outlet Screen	
Shaft Seal	
Quick Clamp Access Door	
Isolation Base (w/Isolators)	
*AMCA "C" Spark Construction	
Shutter Damper	

Anything Else We Should Know?

(Specification?, Paint?, Materials?, Specials?)

Standard Accessories:

- Belt Guard (Belt Drive)
- Shaft And Bearing Guard (Belt Drive)
- Extended Grease Fittings
- CBC Black Enamel

*AMCA C - Non-Ferrous Inlet Cone, Shaft Seal and Buffer Plate

Tell Us About The Project

How is the Fan Set Up (Check the item(s) that apply)

Location (Indoor/Outdoor) _____

~ If Outdoors (Roof Mount) _____

How is the fan mounted:

~ Ducted at inlet _____

~ Ducted at outlet _____

Location of the air

~ From Process _____

~ From Outdoor _____

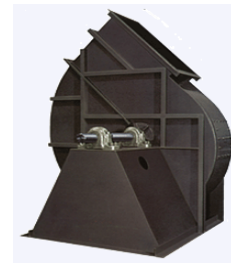
~ From Indoors _____

Required Velocity

Damper Control:

~ Operation (Manual/Auto/Gravity) _____

~ Pneumatic Actuator	_____	Brand
~ Electric Actuator	_____	Brand





Chicago Blower Corporation Add: 1675 Glen Ellyn Rd. Ph: (630) 858-2600 E: fans@chicagoblower.com

Chicago Blower Glendale Heights, IL, 60139 F: (630) 858-7172 W: www.chicagoblower.com

Dust Collection/Material Conveying RFQ

Tell Us About The Fan

Performance	Value	Unit
Flow Required		
Pressure Required		
*At Inlet Only (if known)		
Temperature		
Elevation of project		
Direct or Belt Drive		
Wheel Type		

Accessories Required (Fill In As Best You Can)

Outlet Type (Flange, Slip)	
Outlet Silencer (W/Filter?)	
~ Sound Attenuation (dBA@ft)	
Outlet Damper	
~ Type (Parallel/Opposed)	
Drain and Plug	
Outlet Screen	
AMCA C Spark Resistant*	
AMCA B Spark Resistant**	
Shaft Seal	
Quick Clamp Access Door	
Vibration Base w/Isolator (Remote)	

Anything Else We Should Know?

(Specification?, Paint?, Materials?, Specials?)

Standard Accessories:

- Flanged Inlet
- Belt Guard (Belt Drive)
- Shaft And Bearing Guard (Belt Drive)
- Extended Grease Fittings
- CBC Black Enamel

**AMCA B - AMCA C + Non-Ferrous Wheel

Tell Us About The Project

How is the Fan Set Up (Check the Items That Apply)

Mounting Location:

~ Remote Mounted	
~ Vertically Mounted	

Airstream:

~ Clean Side	
~ Dirty Side	
Location (Indoor/Outdoor)	

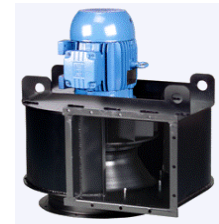
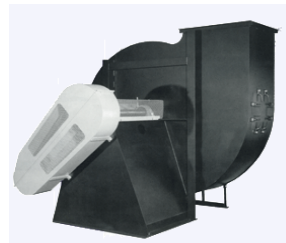
Process Information

If Material Is Conveyed:	Value	Unit
~ Weight of Material		
~ Grain Loading		
~ Material or Product		
~ ~ Wet or Dry		

Required Velocity _____

Damper Control:

~ Operation (Manual/Auto)	
~ Pneumatic Actuator	Brand
~ Electric Actuator	Brand



*AMCA C - Non-Ferrous Inlet Cone, Shaft Seal and Buffer Plate



Chicago Blower Corporation Add: 1675 Glen Ellyn Rd. Ph: (630) 858-2600 E: fans@chicagoblower.com

Chicago Blower Glendale Heights, IL, 60139 F: (630) 858-7172 W: www.chicagoblower.com

Power Generation

Tell Us About The Fan

Performance

	Test Block	100% Perf.	Unit
Flow Required			
Mass Flow Rate			
Density			
Pressure Required			
Temperature			
Elevation of project			
Direct Drive Speed			

Tell Us About The Project

Purpose (Check and Fill In As Best You Can)

Forced Draft Fan		
Forced Draft Fan W/ FGR		
Induced Draft Fan		
FGR Fan		
Combustion Air Fan		
Location (Indoor/Outdoor)		
Sound Attenuation (dBA@ft)		

Accessories Required (Fill In As Best You Can)

Arrangement Required	
Inlet Type (Flanged, Slip)	
Inlet Box	
Inlet Damper	
~ Type (IVD, Pre-Spin)	
Outlet Damper	
~ Type (Parallel, Opposed)	
AMCA C Spark Resistant*	
Shaft Seal	
Quick Clamp Access Door	
Vibration Base w/Isolator	
Lifting Lugs	
Drain and Plug	
Split Housing	
VFD Operation	
Mixing Box (with FGR Port)	

Anything Else We Should Know?

(Specification?, Paint?, Materials?, Specials?)

ID Fans Only	Value	Unit
~ Upset Temperature		
~ Cold Start Temperature		
~ Suction Pressure		

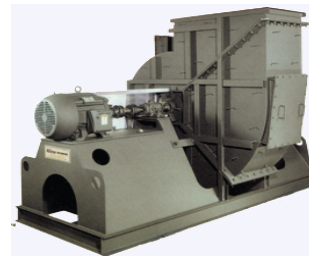
FD/Combustion Fans	Value	Unit
~ Upset Temperature		
~ Cold Start Temperature		
~ Inlet Silencer		
~ Inlet Screen		
~ Windbox Mount		
~ FGR Damper		

Damper Control:	Value	Brand
~ Operation (Manual/Auto)		
~ Pneumatic Actuator		
~ Electric Actuator		
~ Fail Position (LOS)		
~ Fail Position (LOP)		

Standard Accessories

A/4	A/3/7/8/9
Flanged Outlet	Flanged Outlet
CBC Enamel	CBC Enamel
Extended Grease Lines	Extended Grease Lines
	Shaft, Bearing (Coupling) Guard
	Belt Guard (A/9 only)

*AMCA C - Non-Ferrous Inlet Cone, Shaft Seal and Buffer Plate





Chicago Blower Corporation Add: 1675 Glen Ellyn Rd. Ph: (630) 858-2600 E: fans@chicagoblower.com

Chicago Blower Glendale Heights, IL, 60139 F: (630) 858-7172 W: www.chicagoblower.com

Oven/High Temperature Applications

Tell Us About The Fan

Performance	Value	Unit
Flow Required		
Pressure Required		
Temperature		
Upset Temp. (MAX)		
Elevation of project		
Direct or Belt Drive		
Accessories Required (Fill In As Best You Can)		
Inlet Type (Open, Slip, Flange)		
Outlet Type (Flange Slip)		
Inlet Damper (PSID/IVC)		
Outlet Damper		
~ Type (Parallel, Opposed)		
Drain and Plug		
Shaft Seal		
Quick Clamp Access Door		
Isolation Base (w/Isolators)		
*AMCA "C" Spark Construction		
Inlet Box		
Shaft Cooler W/ Guard		
Insulation Studs		
Anything Else We Should Know?		
(Specification?, Paint?, Materials?, Specials?)		

- Standard Accessories:
- Belt Guard (Belt Drive)
 - Shaft And Bearing Guard (Belt Drive)
 - Extended Grease Fittings
 - CBC Black Enamel

*AMCA C - Non-Ferrous Inlet Cone, Shaft Seal and Buffer Plate

Tell Us About The Project

Oven/Kiln/Dryer Applications (Plug Fan)	
Vertical or Horizontal Mounting	
Plug Panel	
~ Non-Insulated	
~ Insulated	
~ ~ Panel Size	
Overhang	
Assembly of Unit	
~ Knock Down Shipment	
~ Assemble Fan	
~ Integral Inlet Cone Assembly	
Other Accessories	
~ Inlet Cone Hardware	
~ Housing	
High Temperature Exhaust Applications	
Location of Fan (Indoors/Outdoors)	
~ If Outdoors (Amb. Low Temp)	
Damper Control:	
~ Operation (Manual/Auto)	
~ Pneumatic Actuator	Brand
~ Electric Actuator	Brand





Auxillary Accessories

Tell Us About The Conditions

Performance	Value	Unit
Flow Required		
Pressure Required		
Temperature		
Elevation of project		
Fan Type		

Tell Us About The Fan (if curve not available)

Chicago Blower Design	
Size	
Arrangement	
% Width (If not 100%)	
Outlet Velocity (CFM/Area)	
Location (Indoor/Outdoor)	
~ Ducted at inlet	
~ Ducted at outlet	

Accessories

Silencers - Provide Curve to Sales for Sizing

Inlet Silencer		
~ Horizontal/Vertical		
~ Fan w/inlet box (Y/N)		
~ Sound Attenuation		
Other:	@	ft
Outlet Silencer		
~ Sound Attenuation		
Other:	@	ft
Support Legs		
Inlet Screen		
Rainhood (Outdoors)		
Flow Measurement (Piezio)		

Dampers - Provide Curve for quickest response time

Inlet Vane Damper	
Pre-Spin Inlet Box Damper	
Fresh Air Damper	
Outlet Damper	
~ Type (Parallel, Opposed)	
Shutter Damper	
~ Gravity Operated	
~ Motorized (Electric (Ph/V))	/
Butterfly (FGR) Damper	
~ ~ Size (Round)	in

Damper Control:

Manual Operation	Hand Lever
Actuator Operation	Brand (If Specified)
Pneumatic	Brand
Electric	Brand

Motor - Provide Specification if available

Motor HP Required	
Motor Speed Required	
Motor Voltage Needed	
Motor Phase Needed	
Motor Type (Premium, IEEE, Etc.)	
Motor Mount Option (Foot, C-face)	
SF Reqd (1.0 On VFD Only)	
Conduit Location (F1, F2, F0 etc)	
VFD Suitable	

Motor Accessories

Immersion Heaters/Thermistats	
Insulated Bearing (DE/NDE/Both)	
Shaft Grounding Brush (Ring)	
RTD (Winding/Bearings/Both)	
Tropicalization/Winterization	
Special Grease (Low Temp/High)	
Space Heater (Specify Voltage)	

Motor Clarification (Explosion/Severe Duty etc)

Class Required	
Division Required	
Groups Required	
Insulation Class Required	
Zone (Typically International)	

Actuator Options (Check all that Apply)

Feedback Transmitter	
Feedback Positioner	
Limit Switches	
~ SPDT	
~ DPDT	
SST Tubing	
Filter Regulator	

Fail Positions:

Fresh Air Damper	
Pre-Spin Inlet Box Damper	
Inlet Vane Damper	
Outlet Damper	
Other Damper	

Note: LOA - Loss of Air, LOP - Loss of Pressure, LOS - Loss of Signal

Anything Else We Should Know?
 (Specification?, Paint?, Materials?, Specials?)



Chicago Blower Corporation Add: 1675 Glen Ellyn Rd. Ph: (630) 858-2600 E: fans@chicagoblower.com

Chicago Blower Glendale Heights, IL, 60139 F: (630) 858-7172 W: www.chicagoblower.com

Repair Parts

Serial or Order information known

CBC Serial Number _____

If Serial Number is unknown:

Original Sold To _____

Original Purchase Order _____

~Date of order _____

Customer or CBC P/N _____

Drawing Number _____

Parts Required (Check All That Apply)

Bearings (Qty 2) _____

Drive (Belts and Sheaves) _____

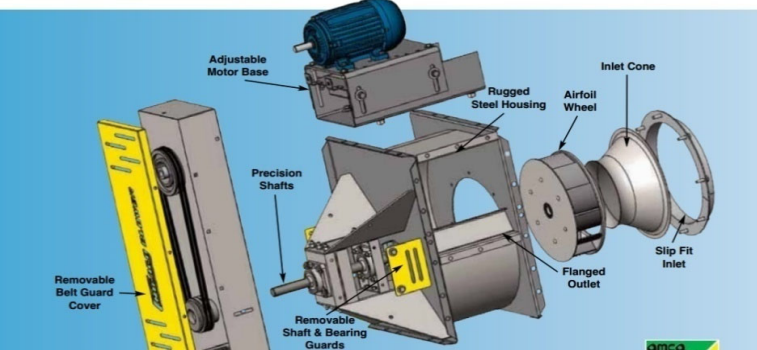
Housing _____

Inlet Cone _____

Motor _____

Shaft _____

Wheel _____



Anything Other Parts Not Listed

(Specification?, Paint?, Materials?, Specials?)

Serial Number Unknown

Performance

	Value	Unit
Flow Required		
Pressure Required		
Temperature		
Elevation of project		
Direct or Belt Drive		
Fan Type		

Please tell us as much as you can if serial unknown

Rotation _____

Speed _____

Discharge _____

Wheel:

~ Wheel Bore Size _____

~ Wheel Width _____

~ Wheel OD _____

Shaft:

~ Shaft OD _____

~ Step? If so drawing req'd _____

~ Shaft Length _____

Bearing:

~ Bearing Size _____

~ Bearing Brand _____

~ Bearing Type _____

Inlet Cone:

~ Old Style (W/ Lip) _____

~ New Style _____

~ Cone OD _____

~ Cone BC Dia. _____

A drawing is worth a thousand words. Thank you for all the information you have been able to provide



Chicago Blower Corporation Add: 1675 Glen Ellyn Rd. Ph: (630) 858-2600 E: fans@chicagoblower.com
 Chicago Blower Glendale Heights, IL, 60139 F: (630) 858-7172 W: www.chicagoblower.com

Chicago Blower Comparison

Tell Us About The Old Fan

Performance of Old Unit (If Known)	
Value	Unit
Flow Required	
Pressure Required	
Temperature	
Elevation of project	
Direct or Belt Drive	
Fan Type	
HP On Existing Fan	HP
Arrangement Of Current Fan	

Accessories On Old Fan (Check All That Apply)

Inlet Type (Flange, Slip, Open)	
Outlet Type (Flange Slip, Open)	
Inlet Damper	
~ Type (IVC, PSID, FA Damper)	
Outlet Damper	
~ Type (Parallel, Opposed)	
Drain and Plug	
Inlet Screen	
Outlet Screen	
Shaft Seal	
Quick Clamp Access Door	
Isolation Base (w/Isolators)	
AMCA C Spark Resistant	
AMCA B Spark Resistant	
Inlet Box	
Companion Flange (Inlet/Outlet)	
Lifting Lugs	

Anything Else We Should Know?

(Specification?, Paint?, Materials?, Specials?)

Tell Us What You Are Looking For

New Performance Req'd (If Applicable)	
Value	Unit
Flow Required	
Pressure Required	
Temperature	
Elevation of project	
Direct or Belt Drive	
Fan Type	

Accessories On New Fan (Check All That Apply)

Inlet Type (Flange, Slip, Open)	
Outlet Type (Flange Slip, Open)	
Inlet Damper	
~ Type (IVC, PSID, FA Damper)	
Outlet Damper	
~ Type (Parallel, Opposed)	
Inlet Silencer	
~ Sound Attenuation	
Outlet Silencer	
~ Sound Attenuation	
Drain and Plug	
Inlet Screen	
Outlet Screen	
Shaft Seal	
Quick Clamp Access Door	
Isolation Base (w/Isolators)	
AMCA C Spark Resistant	
AMCA B Spark Resistant	
Inlet Box	
Companion Flange (Inlet/Outlet)	
Lifting Lugs	

Tell Us About The Project

How is the Fan Set Up

Location (Indoor/Outdoor)	
~ If Outdoors (Roof Mount)	
How is the fan mounted:	
~ Ducted at inlet	
~ Ducted at outlet	
Location of the air	
~ From Process	
~ From Outdoor	
~ From Indoors	

Required Velocity

Damper Control:

~ Operation (Manual/Auto)	
~ Pneumatic Actuator	Brand
~ Electric Actuator	Brand

How should we build

Dimensionally Interchangable (Y/N)

	Yes/No	Dimension
~ Foundation		
~ Inlet Size		
~ Outlet Size		
~ CL Height		

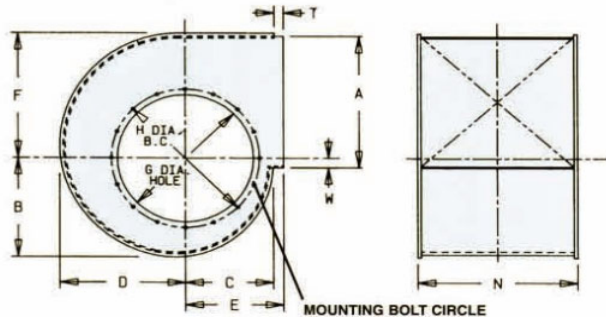
New Unit - Dims. are CBC Standard

Bore Size	
-----------	--

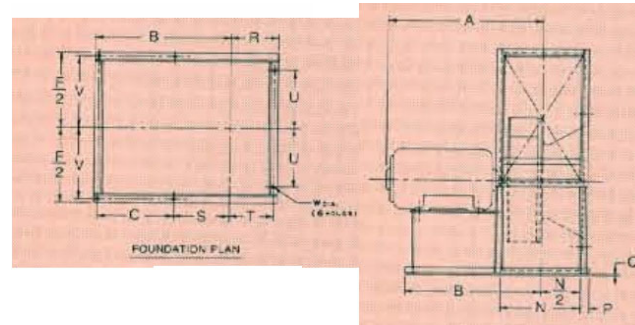
*Please Provide any Drawings or Information you have to help the quoting process



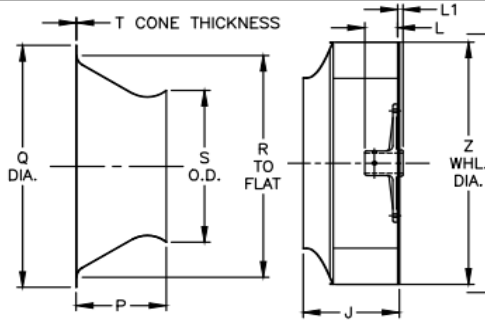
Chicago Blower Corporation Add: 1675 Glen Ellyn Rd. Ph: (630) 858-2600 E: fans@chicagoblower.com
 Chicago Blower Glendale Heights, IL, 60139 F: (630) 858-7172 W: www.chicagoblower.com



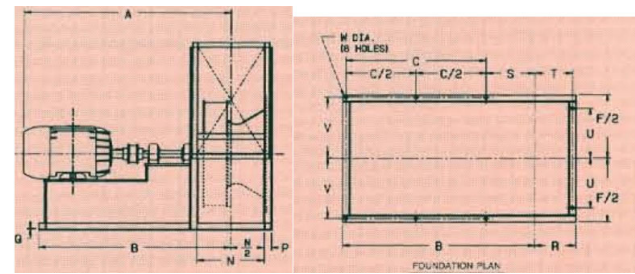
Housing Dimensions		
Existing Fan	Unit	
B =		
F =		
A =		
A (BC) =		
A (OD) =		
D =		
E =		
N =		



Arr 4 Fans		
Existing Fan	Unit	
B =		
R =		
U =		
S =		
T =		
C =		
F =		
V =		
A =		
N =		
B =		

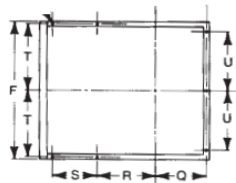


Inlet Cone and Wheel		
Existing Fan	Unit	
Q =		
P =		
J =		
Z =		
Bore =		

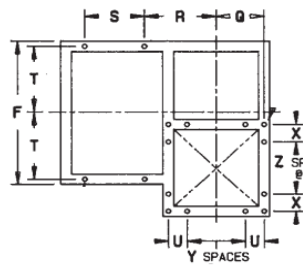


Arr 8 Fans		
Existing Fan	Unit	
B =		
R =		
U =		
S =		
T =		
C =		
F =		
V =		
A =		
N =		
B =		

FOUNDATION PLAN



FOUNDATION PLAN
Down Blast Discharge



Arr 1 or 9 Foundation		
Existing Fan	Unit	
F =		
T =		
S =		
R =		
Q =		
U =		
Z =		
X =		
Y =		